



MONTHLY MEMBERSHIP PROGRESS REPORT

District 15

Results as of: 5/31/2017

GMT: Kenneth Schwols

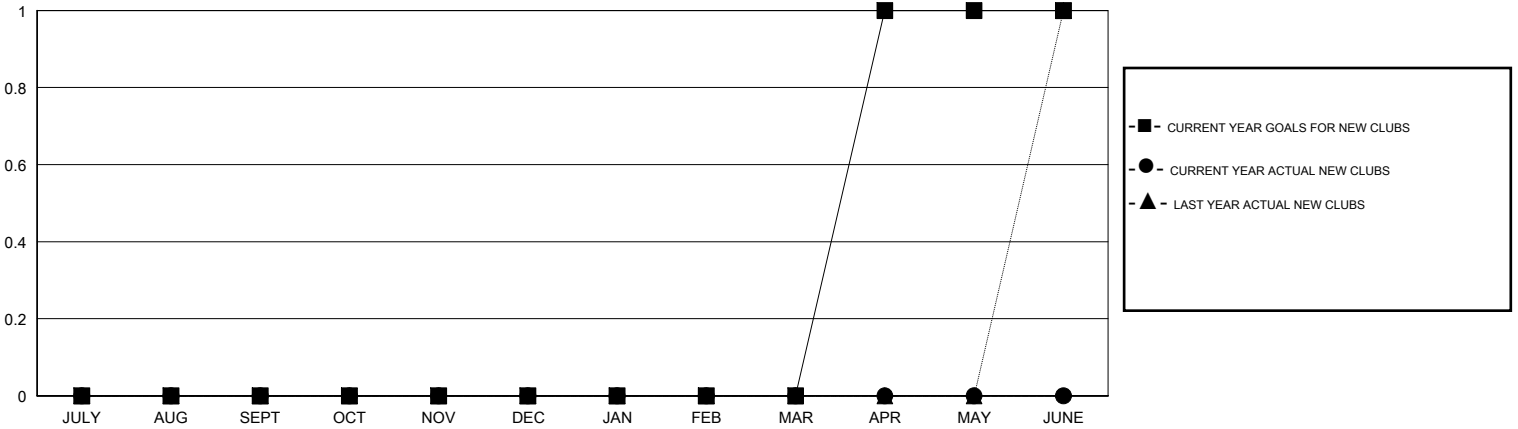
LOCATION WYOMING

GMT CA

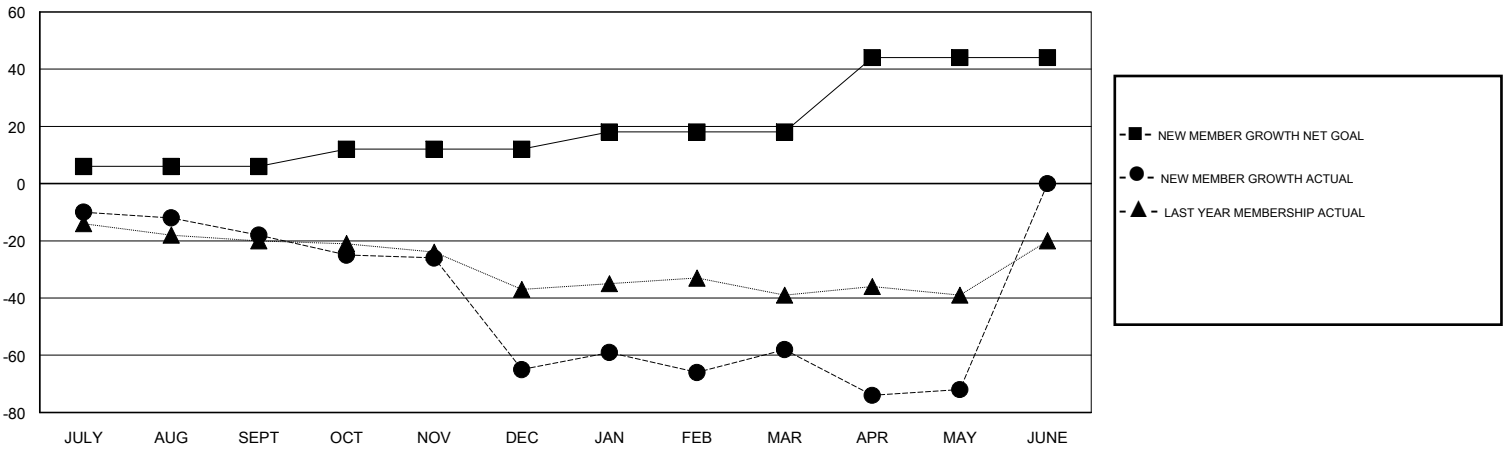
| Clubs | | | |
|-----------------------|---------------|-----------|---------------|
| RESULTS FOR 2016-2017 | | | |
| QUARTER | NEW CLUB GOAL | NEW CLUBS | DROPPED CLUBS |
| JULY/AUG/SEPT | 0 | 0 | 0 |
| OCT/NOV/DEC | 0 | 0 | 1 |
| JAN/FEB/MAR | 0 | 0 | 0 |
| APR/MAY/JUNE | 1 | 0 | 0 |

| Members | | | |
|-----------------------|--|--|--|
| RESULTS FOR 2016-2017 | | | |
| QUARTER | NEW MEMBER GROWTH NET GOAL (not reinstated or transfers) | NEW MEMBER GROWTH ACTUAL (not reinstated or transfers) | DROPPED MEMBERS ACTUAL (including transfers) |
| JULY/AUG/SEPT | 6 | 7 | 25 |
| OCT/NOV/DEC | 6 | 18 | 65 |
| JAN/FEB/MAR | 6 | 24 | 17 |
| APR/MAY/JUNE | 26 | 11 | 25 |

GOALS AND ACTUAL NEW CLUBS CUMULATIVE



GOALS AND ACTUAL MEMBERS CUMULATIVE



| | | |
|------------------------|---|------------------------------------|
| DROPPED CLUBS: 1 | 27 CLUBS OF 45 ADDED 1 OR MORE NEW MEMBERS | GENDER DISTRIBUTION |
| | | MALE 918 (81.75%) |
| | | FEMALE 205 (18.25%) |
| DROPPED MEMBERS | CLICK HERE FOR CUMULATIVE MEMBERSHIP DATA | TOTAL FAMILY UNIT MEMBERS 105 |
| DECEASED 22 | | FAMILY MEMBERS PAYING HALF DUES 53 |
| CLUB CANCELLED 16 | | |
| OTHER 94 | | |
| TOTAL 132 | | |